


Criterion VII- Institutional Values and Best Practices

Key Indicator – 7.1 Institutional Values and Social Responsibilities.

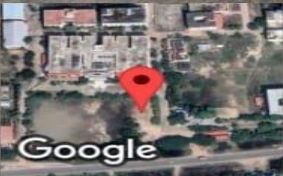
Metric No: 7.1.3 Institution waste management practices include

- 1. Segregation of waste**
- 2. E - Waste management**
- 3. Vermi – Compost**
- 4. Bio gas Plants**
- 5. Sewage Treatment plant**

Geo- tagged Photographs.


PRINCIPAL
INDHIRA COLLEGE OF EDUCATION
PANDUR, TIRUVALLUR-631 203

Segregation of waste




GPS Map Camera

Pandur, Tamil Nadu, India
5R2X+9G8, Pandur, Tamil Nadu 602001, India
Lat 13.151306°
Long 79.848508°
16/02/24 08:39 AM GMT +05:30

Ajay Perumal

PRINCIPAL
INDHIRA COLLEGE OF EDUCATION
PANDUR, TIRUVALLUR-631 203



 GPS Map Camera



Pandur, Tamil Nadu, India
5R2X+9G8, Pandur, Tamil Nadu 602001, India
Lat 13.151382°
Long 79.848462°
16/02/24 08:40 AM GMT +05:30


PRINCIPAL
INDHIRA COLLEGE OF EDUCATION
PANDUR, TIRUVALLUR-631 203

SEGREGATION OF WASTE



Pandur, Tamil Nadu, India
5R2X+R9J, Pandur, Tamil Nadu 602001, India
Lat 13.152092°
Long 79.848379°
15/03/24 08:23 AM GMT +05:30

Ajay Perich
PRINCIPAL
INDIRA COLLEGE OF EDUCATION
PANDUR, TIRUVALLUR-631 203

WHEELED DUSTBINS



GPS Map Camera

Pandur, Tamil Nadu, India
5R2W+5XH, Pandur, Tamil Nadu 602001, India
Lat 13.150683°
Long 79.848056°
15/03/24 08:47 AM GMT +05:30

Ajay Perik
PRINCIPAL
INDIRA COLLEGE OF EDUCATION
PANDUR, TIRUVALLUR-631 203

WHEELED DUSTBINS



Ajay Perich
PRINCIPAL
INDIRA COLLEGE OF EDUCATION
PANDUR, TIRUVALLUR-631 203

WASTE MANAGEMENT



Ajay Periak

PRINCIPAL
INDIRA COLLEGE OF EDUCATION
PANDUR, TIRUVALLUR-631 203

WASTE MANAGEMENT



A. J. Perin
PRINCIPAL
INDIRA COLLEGE OF EDUCATION
PANDUR, TIRUVALLUR-631 203

WASTE MANAGEMENT



Pandur, Tamil Nadu, India
5R2X+9G8, Pandur, Tamil Nadu 602001, India
Lat 13.15125°
Long 79.84867°
19/03/24 08:31 AM GMT +05:30



Ajay Perinik
PRINCIPAL
INDHRA COLLEGE OF EDUCATION
PANDUR, TIRUVALLUR-631 203

DRY LEAVES SEGREGATION



Pandur, Tamil Nadu, India
5R2X+R9J, Pandur, Tamil Nadu 602001, India
Lat 13.152103°
Long 79.848602°
19/03/24 08:33 AM GMT +05:30

Ajay Perinik
PRINCIPAL
INDHIRA COLLEGE OF EDUCATION
PANDUR, TIRUVALLUR-631 203

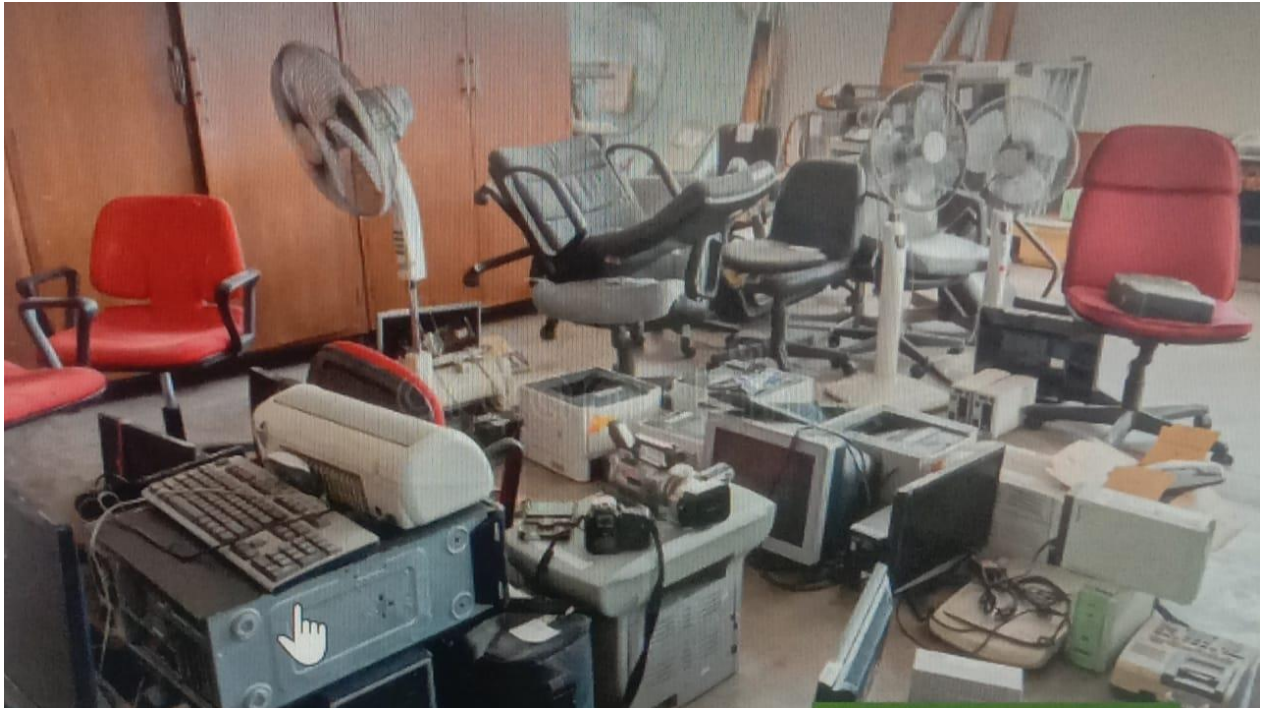
E- WASTE MANAGEMENT PHOTOS



Ajay Perich

PRINCIPAL
INDHIRA COLLEGE OF EDUCATION
PANDUR, TIRUVALLUR-631 203

E - WASTE MANAGEMENT PHOTOS



Alex Perin

PRINCIPAL
INDIRA COLLEGE OF EDUCATION
PANDUR, TIRUVALLUR-631 203

3. VERMI COMPOST PIT



Ajay Perinik

PRINCIPAL
INDHIRA COLLEGE OF EDUCATION
PANDUR, TIRUVALLUR-631 203

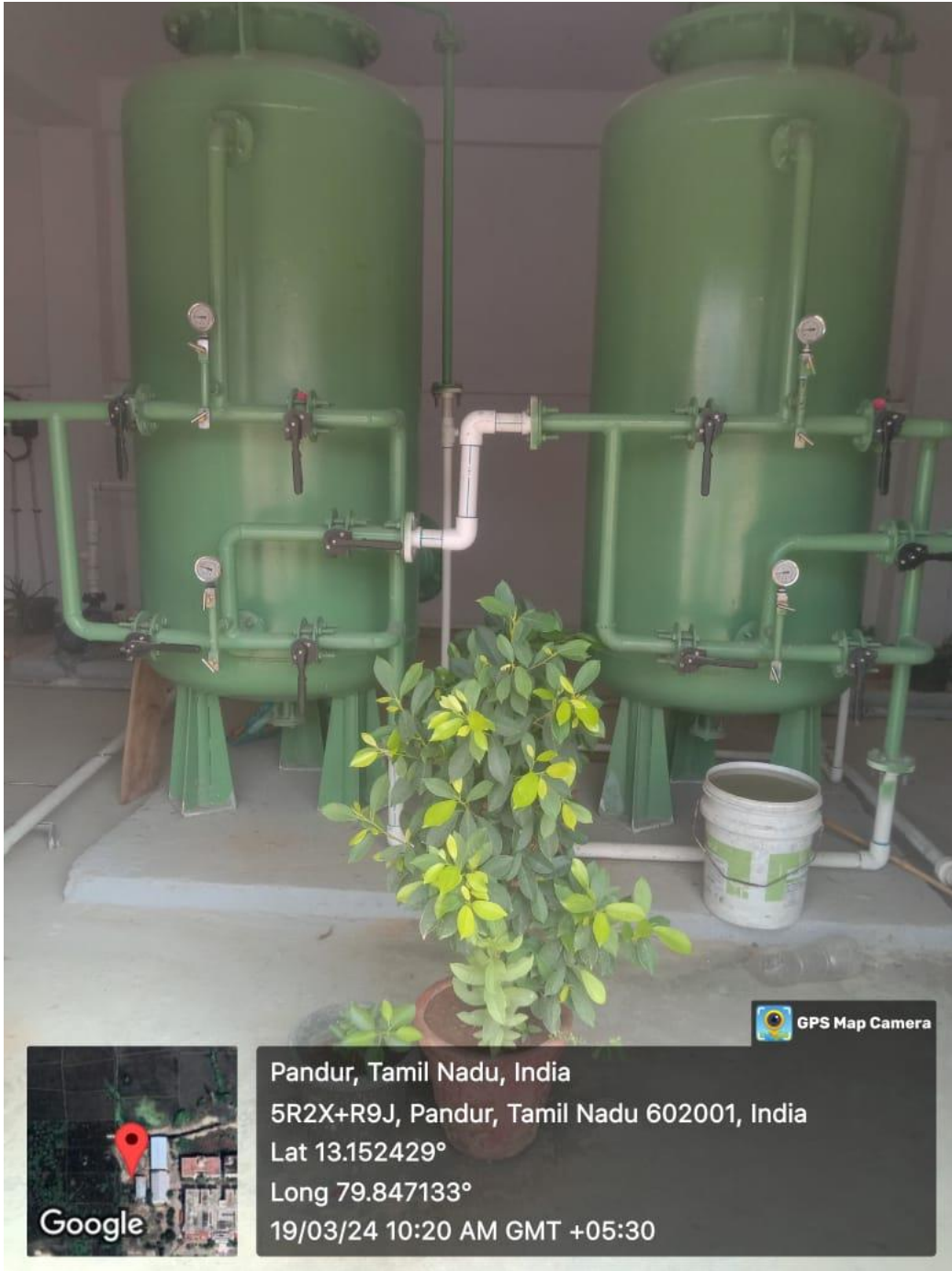
BIO GAS PLANT



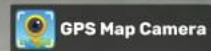
Ajay Periak

PRINCIPAL
INDIRA COLLEGE OF EDUCATION
PANDUR, TIRUVALLUR-631 203

WASTE WATER RECYCLING



Google



Pandur, Tamil Nadu, India
5R2X+R9J, Pandur, Tamil Nadu 602001, India
Lat 13.152429°
Long 79.847133°
19/03/24 10:20 AM GMT +05:30

Ajay Perich

PRINCIPAL
INDHIRA COLLEGE OF EDUCATION
PANDUR, TIRUVALLUR-631 203